

# TILIA Control Panel

Instantly Access Your Seismic Data with Tilia Onsite Control Panel

**TILIA**  
SERIES

**Tilia Control Panel** is a powerful add-on product for onsite monitoring and management of Tilia seismic accelerographs and their data.

The control panel features a 10" touch display which can be used to live-monitor vibration and seismic activity, to configure Tilia instruments, inspect their data, analyze earthquake and vibration records and issue alarms. The Tilia Control Panel is capable of powering a daisy chain of Tilia instruments with PoE, thereby highly simplifying cabling. The system can also be equipped with a backup battery to continue operations during power outages. The built-in industrial grade computer can work as a file server, and the panel can be connected to the internet if required, or can be supplied with a 4G cellular modem built-in.



The shown product requires a Tilia Seismic Accelerograph. Actual configuration may vary from picture.

## Product Features



### Tilia Control Panel (base)

- 10" Touch Display & Computer
- PoE supply for Tilia instruments
- Integrated Siren and Alarm Light
- Integrated relay for external activation
- Connector for external battery
- 300 x 300mm steel enclosure
- Wall-mountable
- Alarm Reset Button
- Live seismic intensity view
- Direct access to recorded data

## Accessories (optional)



### 4G Modem

- 4G LTE CAT4/3G with mini-SIM
- Power over Ethernet
- IP30, -40°C to 70°C
- Support for VPN

The 4G modem ensures fast and reliable internet connection in remote areas, and in installations where a wired internet connection is not available.



### Battery

- External 12V lead battery
- 7Ah - 100Ah (specify at order)

For projects which require backup power, a 12V battery can be connected to the control panel externally.



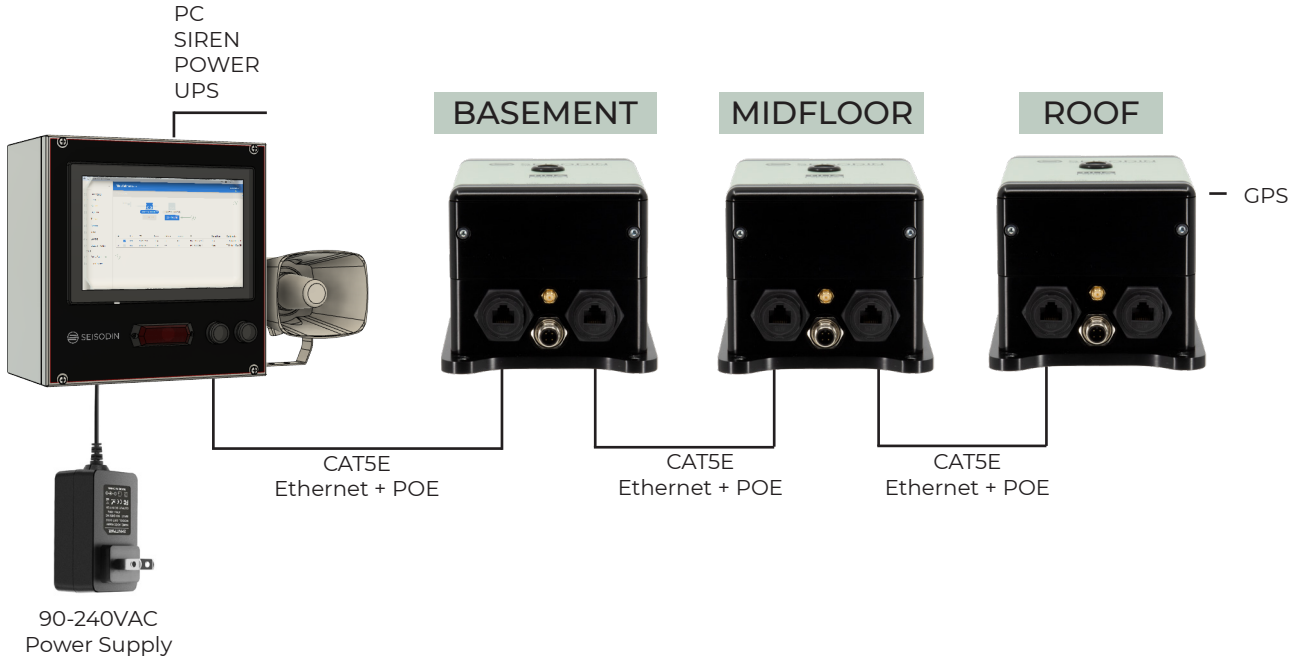
Contact us today  
Seisodin ApS  
Denmark  
+45 93 83 87 09  
www.seisodin.com  
info@seisodin.com



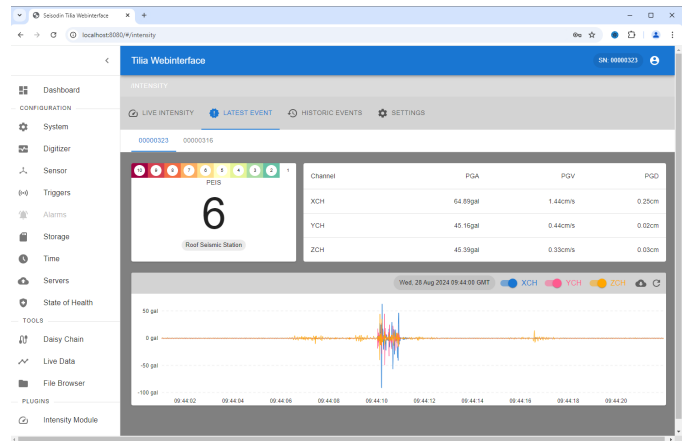
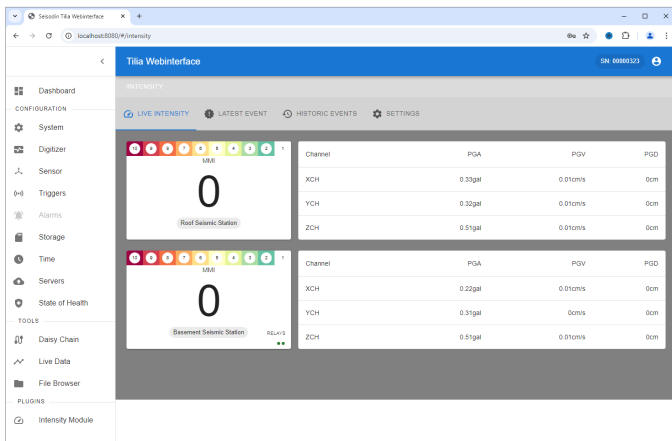
# TILIA ONSITE CONTROL & DISPLAY PANEL

## Instantly Access Your Seismic Data !

### Connection Diagram (example)



### Live Intensity Monitor



Date	Time	Instrument	PEIS	MM	PGA (gal)	ACK	Details
28 Aug 2024	11:51:03	00000316	5.37	4.41	12.41,5.16,2.27	<input type="checkbox"/>	<a href="#">VIEW</a>
28 Aug 2024	11:50:16	00000316	6.12	4.96	9.5,2.92,54.06	<input checked="" type="checkbox"/>	<a href="#">VIEW</a>
28 Aug 2024	11:48:55	00000316	5.39	4.43	3.98,2.43,28.16	<input checked="" type="checkbox"/>	<a href="#">VIEW</a>
28 Aug 2024	11:44:00	00000323	6.09	4.93	64.89,45.15,45.39	<input checked="" type="checkbox"/>	<a href="#">VIEW</a>
18 Aug 2024	09:46:24	00000323	6.15	4.98	38.18,41.31,79.66	<input checked="" type="checkbox"/>	<a href="#">VIEW</a>
18 Aug 2024	09:46:08	00000323	6.51	5.24	24.02,59.95,149.22	<input checked="" type="checkbox"/>	<a href="#">VIEW</a>
7 Aug 2024	13:36:49	00000323	6	4.87	19.52,34.02,46.64	<input checked="" type="checkbox"/>	<a href="#">VIEW</a>
5 Aug 2024	06:56:03	00000323	6.02	4.89	25.71,22.54,59.07	<input checked="" type="checkbox"/>	<a href="#">VIEW</a>

**Alarm Activated**

MUTE ALARM      CANCEL ALARM

By cancelling the alarm, you also deactivate the relays. Muting the alarm will keep the relays activated.



# TILIA ONSITE CONTROL & DISPLAY PANEL

Instantly Access Your Seismic Data !

## Connector Overview

