



# SEISODIN

WE MAKE STRONG MOTION ACCELEROGRAPHS

## Earthquake Alarm



# Seisodin Earthquake Alarm

## Act Instantly with a Seismic Alarm

With a Seisodin Earthquake Alarm System you will get an instant alarm when an earthquake has been detected.

The system consist of 1 scientific-grade seismic accelerograph and a control panel with a 10" touch display. The control panel contains an alarm system with sound and light, which will activate when an earthquake is detected by the sensor. The control panel also contains 3 configurable relays which can be connected to an external appliance for automatic shut down, or external alarm activation. The system easily connects to fire alarm systems, PLC's and other control systems which can read dry contact relay states, and even has a built-in backup battery so the system will continue operating during a power outage.

Seisodin Earthquake alarms may easily be expanded from 1 to 3 sensors to further enhance the system, and reduce the risk of false alarms.



Seisodin Earthquake Alarm shown with optional 3 sensors



## FEATURES

- Easy to use and simple to install
- Integrated siren and warning light
- 3 configurable relays + 1 system fault relay
- No maintenance (10yr calibration-free)
- Simple cabling using Ethernet cable
- Built-in backup battery (UPS)
- Integrated GPS for precise timing
- Seismic Event reports with earthquake intensity in MMI seismic scale

## OPTIONAL FEATURES

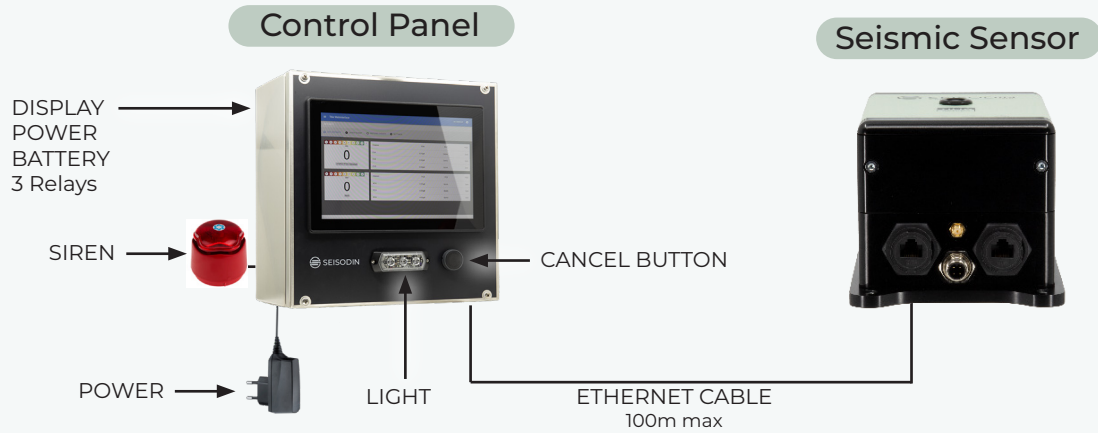
- Cloud system for data and reports
- 4G modem
- MP3 voice annunciator
- Upgrade to Class-A accelerograph (FBA)



# Connection Diagram

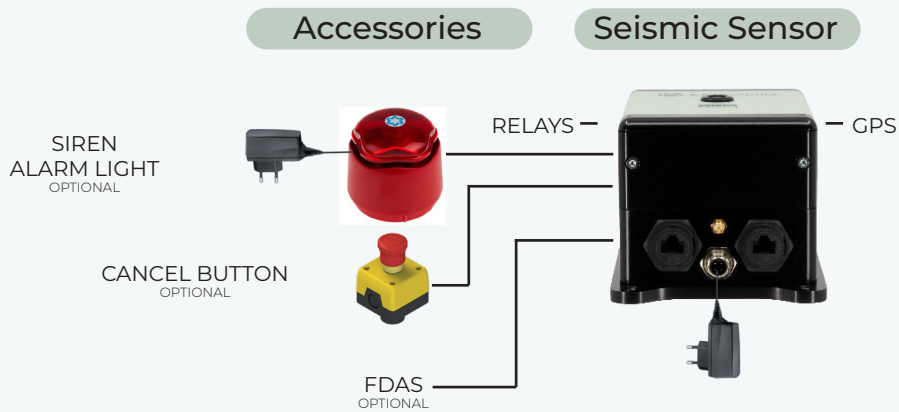
## SINGLE INSTRUMENT SOLUTION

## CONNECTION DIAGRAM



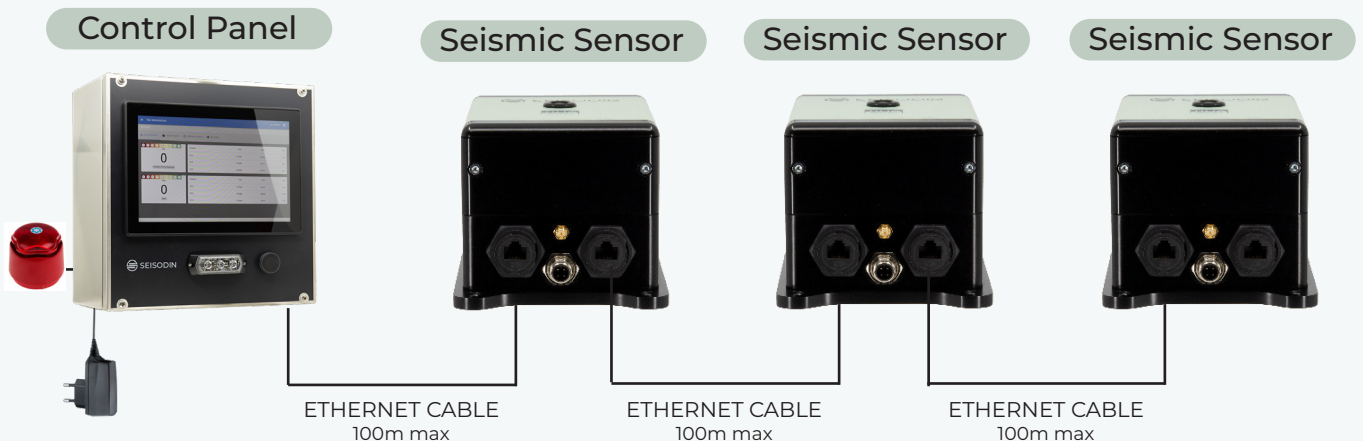
## SINGLE INSTRUMENT SOLUTION (NO DISPLAY)

## CONNECTION DIAGRAM



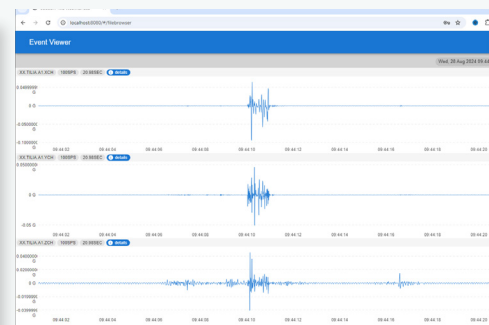
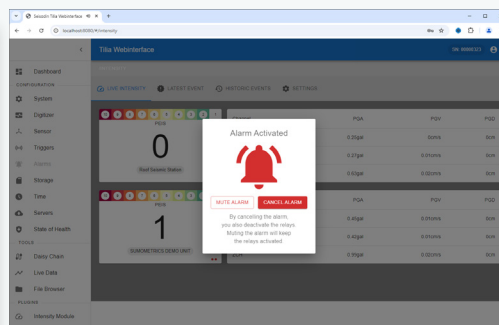
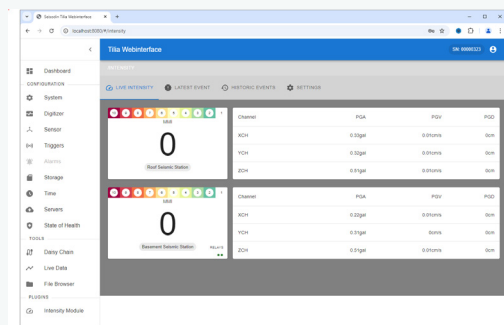
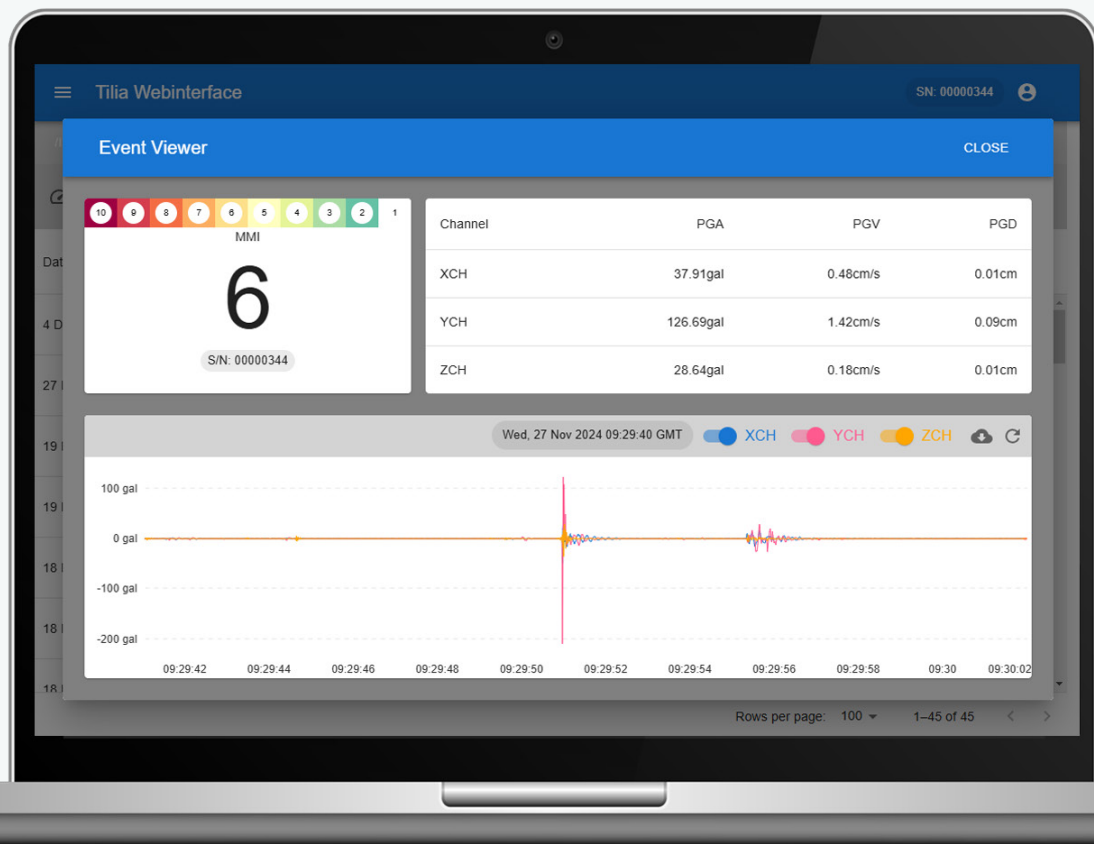
## MULTIPLE INSTRUMENTS SOLUTION

## CONNECTION DIAGRAM



# User Interface

## Live View and Instant Alarm!



# What is in the box?

## INCLUDED IN THE BOX



### **Tilia T100**

State-of-the-art networked seismic strong motion accelerograph with 250Hz bandwidth and a dynamic range of up to 105dB. The instrument integrates sensors and digitizers in the same box, greatly lowering system complexity. Instruments have double ethernet interface to allow daisy chaining multiple accelerographs.



### **Tilia Control Panel**

Control panel for use with Seisodin Earthquake Alarm system. The panel contains a 10" industrial touch screen with access to monitoring and alarm interface and has an integrated siren and warning light which activate when an earthquake is detected. The control panel also contains 3 configurable relays which can be used for automatic shutdown or external alarm activation. The Tilia Control Panel includes all software required for live monitoring of seismic activity.



### **50m Ethernet Cable**

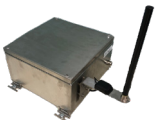
CAT5E 24AWG ethernet cable for connecting one Tilia sensor to a control panel. Comes with RJ45 connectors already mounted. Different cable lengths available on request.

## Optional Accessories



### **4G MODEM**

4G/LTE Modem with support for VPN connections. Ideal for connecting to Seisodin Cloud or gaining remote access to the system.



### **Tilia Protective Enclosure**

300 x 300 mm stainless steel enclosure. Suitable for extra protection of Tilia instruments.



### **Tilia External Siren and Alarm Light**

Combined siren and alarm light, including power supply and connector for either Tilia Instrument or as extra siren for Control Panel.



### **Tilia External Cancel Button**

Externally mounted push button for canceling alarms in Tilia instruments or control panels.



# Tested, Certified and Approved

## Seismic Qualification IEC 60068-3-3 Seismic Zone 4 ACCREDITED TEST REPORT AVAILABLE



"Decreto de la igualdad de oportunidades para mujeres y hombres"  
"Año del Bicentenario de la consolidación de nuestra independencia,  
y de la conmemoración de las heroicas batallas de Junín y Ayacucho"

CARTA N°00025-2024-IGP/PE

Lima, 24 de Abril del 2024

Señora  
Melva Collantes Gómez  
Gerente General  
Empresa TERRASENSOR S.A.C.  
Presente

Referencia: Solicitud S/N de fecha: 05/02/2024 Expediente 02026-2024

Me es grato hacerle llegar un cordial saludo y en atención a su documento de la referencia, comunicarle que, personal de la Unidad de Ingeniería de la Subdirección de Redes Geofísicas del Instituto Geofísico del Perú, ha efectuado la evaluación de los equipos acelerométricos presentados por su despacho para revisión de las especificaciones técnicas en cumplimiento con lo dispuesto en el Reglamento Nacional de Edificaciones, Norma Técnica E.030, los cuales corresponden a los modelos: TILIA T100 y TILIA T130.

De la evaluación efectuada, el resultado indica que los 02 modelos presentados, cumplen los aspectos correspondientes a los equipos de registro acelerométrico, según lo establecido por el Instituto Geofísico del Perú - IGP, para la implementación de estaciones acelerométricas requeridas por la Norma Técnica E.030 "Diseño Sísmorresistente", según el INFORME N°0034-2024/IGP/DC-RGE, del Director de la Subdirección de Redes Geofísicas, del Instituto Geofísico del Perú.

Cabe precisar que los presentes equipos revisados al igual que otras marcas de acelerómetros triaxiales validados, cumplen con las normativas vigentes y recordar que el documento emitido por el IGP es estrictamente a modo de respuesta, por lo que no debe usarse como medio publicitario.

Agradecido por su atención, hago propicia la oportunidad para expresarle mis sinceras muestras de consideración.

Muy atentamente,

Dr. Hernando Tavera  
Presidente Ejecutivo



HTV/jb.  
Esta es una copia auténtica imprimible de un documento electrónico archivado en el Instituto Geofísico del Perú, aplicando lo dispuesto por el Art. 25 de D.S. 07092013/PCM y la tercera Disposición complementaria final del D.S. 002-2016/PCM. Su autenticidad e integridad pueden ser contrastadas a través de la siguiente dirección web: <http://www.igp.gob.pe/inf/consultadoveritas> e ingresando la siguiente clave: 8834F8D

www.igp.gob.pe  
Calle Rodríguez Nº 160  
Urb. Independencia N° 18000  
Ate, Lima 12012 - Perú  
(51) 11 772200



VIRLAB, S.A. REPORT NUMBER Page Number  
Division of URBAR INGENIEROS, S.A. 243601 1/79

REPORT OF THE SEISMIC TESTS CARRIED OUT ON  
"TWO (2) ACCELEROGRAPHS"  
SUPPLIED BY SEISODIN



Documents and activities marked with (\*), as well as information and activities indicated as supplied or performed by the client, are not covered by ENAC accreditation

**NOTE:** According to section 7.8.2 of standard ISO-IEC 17025:2017, it is stated that:  
• The results of the present report apply only and exclusively to the samples subjected to test.  
• The partial reproduction of this document without the previous written permission of the Laboratory is forbidden.  
• The Laboratory is not responsible for the information and activities indicated as supplied or performed by the client.

VIRLAB, S.A. Division of URBAR INGENIEROS, S.A.		Carried out by	Revised and authorized by
Polígono Industrial de Asteasu Zona B, Pabellón 44 28159 Asteasu (Gulpúzea) SPAIN	www.virlab.es E-mail: laboratorio@virlab.es Tel.: +34 943 69 15 00	Firmado digitalmente por Tritan Ugarte	Firmado digitalmente por Alberto CORRAL
		Fecha: 2024.04.12	Fecha: 2024.04.12
		13:29:40 +02'00'	13:43:49 +02'00'
		Laboratory Engineer	Technical Director

THIS DOCUMENT HAS BEEN SIGNED ELECTRONICALLY. ANY PAPER REPRODUCTION WILL BE CONSIDERED A COPY

**Seisodin** Tilia Accelerographs are fully seismically tested according to international standard IEC 60068-3-3 and have been qualified for use in seismic zone 4, making it suitable for use in even the most active seismic regions in the world.

Additionally, the instruments have been tested and approved by national agencies around the world.